



THE ENDEAVOR

A PUBLICATION OF THE STEGE SANITARY DISTRICT OF CONTRA COSTA COUNTY

VOLUME XXIII NUMBER 1

SERVING EL CERRITO, KENSINGTON, AND RICHMOND ANNEX

Summer 2017

BOARD OF DIRECTORS

Beatrice O'Keefe
President

Dwight Merrill
Vice President

Paul Gilbert-Snyder
Director

Jay James
Director

Alan C. Miller
Director

DISTRICT MANAGER/ ENGINEER

Rex Delizo, P.E.

MISSION STATEMENT OF THE STEGE SANITARY DISTRICT

It shall be the mission of the Stege Sanitary District to plan and operate a safe, efficient, and economical wastewater collection and transfer system for the present and future customers of the District.

INSIDE

District Gets a New CCTV
Van 2

FY 2017-218
Budget 2

CWEA PICK Award 3

Transparency Certificate
of Excellency Award .. 3

Sewer Rates Comparison
Chart 3

Don't Forget 3

Spotlight on Service:
District Inspectors 4

District Board of
Directors 4




No Rate Increase for 2017

In 2014, the Stege Sanitary District Board of Directors approved a rate increase plan that was to be phased in over a period of five years. Through careful planning and efficient use of resources, the District has been able to defer that part of the rate increase. Instead, the annual residential sewer rate will remain at \$242.00 (\$20.17 a month) for the fiscal year 2017-2018. The non-residential

rate will remain \$4.97 per 1000 gallons.

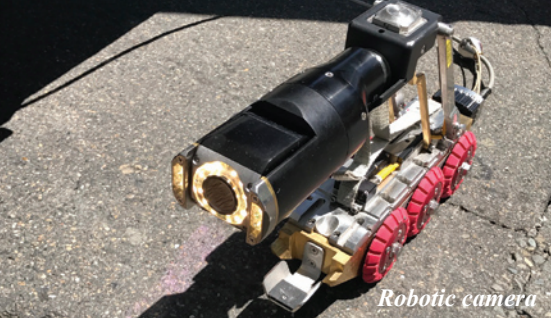
The current rate structure will meet necessary operating and capital improvement expenses while maintaining sufficient emergency reserve funds.

Sewer service rates in the District remain among the lowest in the Bay Area. A comparison chart of regional sewer service rates appears on page 3. 



Maintenance crews use a combination hydro jetter and vacuum truck to clean sewer mains.

The District Gets a New CCTV Van



Robotic camera

Sturgeon Sanitary District maintains 148 miles of underground sewer lines. Knowing which pipes need repair or replacement before they fail is essential in planning a maintenance and rehabilitation program that is both reliable and cost-effective.

Closed Circuit TV (CCTV) allows the District to remotely inspect and record, both as video and as stills, the condition of its sewer lines. In 2005, the District acquired its own CCTV capability when it purchased a remote inspection camera, computer equipment, software and van. This year, the District purchased a new video van that has upgraded software and a backup monitor.

The District's yearly goal is to identify and service 100% of sewer lines that need maintenance. The new van will aid in meeting that goal. S



Robotic camera being lowered into a sewer main. Software in the van will record the condition of the pipe.

Fiscal Year 2017-18 Budget

REVENUE

Sewer Operation Fund

Non Operating Income:	
Interest	5,000
Miscellaneous	21,000
Operating Income:	
Permit & Inspection Fees	15,000
Sewer Service Charges	2,435,000
Contracted Services	30,000
Subtotal	2,506,000

Capital Fund

Non-Operating Income:	
Interest	5,000
Operating Income:	
Property Tax	369,000
Capital Service Charges	2,242,000
Connection Fees	150,000
Subtotal	2,766,000

TOTAL REVENUE 5,272,000

EXPENSES

Operating Expenses:

Maintenance/Engineering	1,719,980
Pump Stations	18,660
Contracted Repairs	61,000
General & Administration	690,150
Subtotal	2,489,790

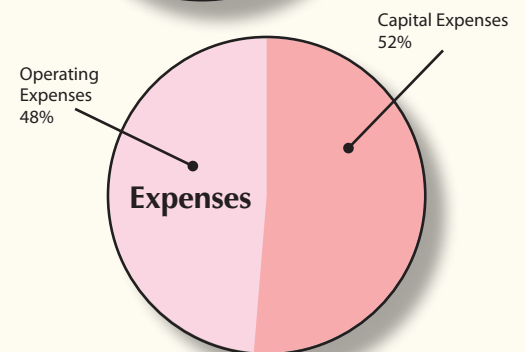
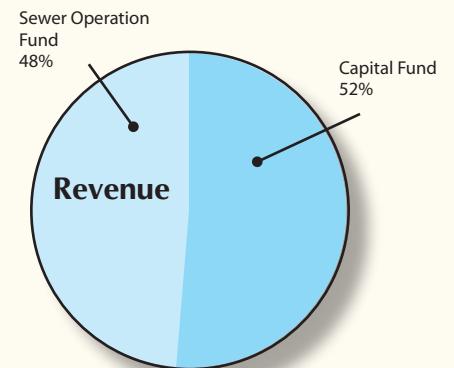
Capital Expenses

Capital Equipment	46,000
Debt Repayment -SRF Loan	148,200
Sewer Rehabilitation	2,456,000
Subtotal	2,650,200

TOTAL EXPENSES 5,139,990

Transfer to/(from) Reserves

Revenue	5,272,000
Expenses	(5,139,990)
Transfer to/(from) Reserves	132,010



The District adheres to an investment policy for reserve funds that complies with state statutes and stipulates safety, liquidity, and yields as the order of investment objectives. All currently invested funds are with the State Local Agency Investment Fund (LAIF).

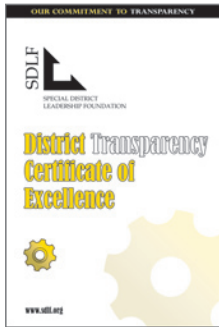
CWEA PICK Award

On April 25, Dennis Wright, the District's Maintenance Superintendent, received an award he had no idea he was getting—the California Water Environment Association (CWEA) PICK Award for the San Francisco Bay Section. The distinguished PICK award recognizes wastewater collection industry Professionalism, Ingenuity, Contribution and Knowledge. Dennis was nominated anonymously by fellow CWEA members.



For the past four years, Dennis has volunteered his time every other month to teach classes on how to correctly and safely use equipment to clean sewer lines. He has also taught classes that explained what easements are and how to work with them.

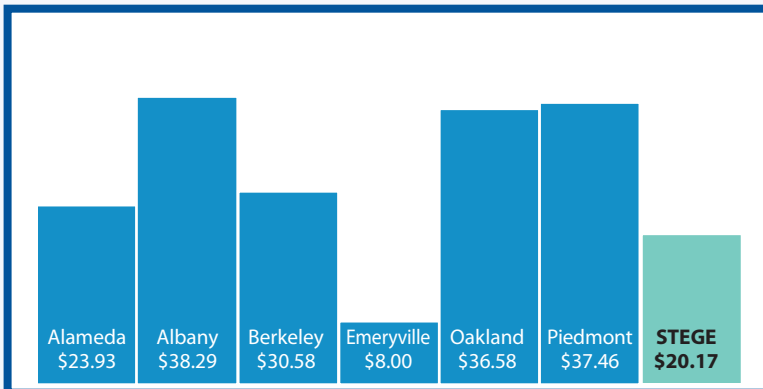
The only other Stege employee to receive the award was Walt Lunn in 2004. Walt retired from the District in 2014. **S**



Transparency Certificate of Excellence Award

The Stege Sanitary District has again earned the District Transparency Certificate of Excellence by the Special District Leadership Foundation (SDLF) in recognition of its outstanding efforts to promote transparency and good governance. **S**

Monthly Sewer Service Charge Comparison



In addition to having one of the lowest sewer rates in the EBMUD service area, the District's wastewater overflow average continues to be one of the lowest in the state and region.

Don't Forget

4th of July Celebration



Join the City of El Cerrito in celebrating Independence Day at beautiful Cerrito Vista Park with arts exhibits, carnival food and games, live entertainment, and an animal-free circus. While there, be sure to visit the District booth, where you will be able to ask questions of Board members, view maps, learn about backflow prevention devices, and pick up useful pamphlets, and past newsletters. **S**

Sewer Problems? CALL US FIRST!

If you see water backing up into your home, **call Stege before you call a plumber.** That number is **(510) 524-4667**. It is answered 24/7 by a real person. The problem may be in your lateral, or it may be in the sewer main. If necessary, we will send a crew out to investigate. The inspection is free and we try to respond within one hour. **S**



Put Wipes in the Trash, Not in the Toilet



Unlike toilet tissue, disposable "flushable" wipes don't disintegrate in water. They retain their form and accumulate in sewer mains where they can cause a sewer overflow into the street. Put all wipes where they belong—in the trash, not in the toilet. **S**

BPD

A backflow prevention device (BPD) provides an emergency escape path should wastewater back up in your lateral. BPDs must be installed outside the home so overflow will occur outside, not inside your home.



If you are unsure if you already have a backflow prevention device on your lateral or if you want to know if you need one, contact the District at (510) 524-4668 (Monday through Thursday: 8:00 am to 5:00 pm; Friday: 8:00 am to 4:00 pm) to make an appointment for a free inspection. **S**



STEGE SANITARY DISTRICT
7500 Schmidt Lane
El Cerrito, CA 94530-0537 (510) 524-4667

PRSRT STD
U.S. POSTAGE
PAID
FREMONT CA
PERMIT #68

To Contact Us: Phone: (510) 524-4668 or after hours (510) 524-4667 Email: staff@stegesan.org Web: www.stegesan.org

Spotlight on Service District Inspectors

You may have already met Arvin Gonzales.

If you've had work done on your sewer lateral, it was probably Arvin who came out to make sure the job was done correctly. If your inspection was on a Friday, the inspector might have been Paul Soo, the District's Associate Engineer, but Arvin

conducts most lateral inspections.

Homeowners are required to obtain a permit from the District when they have their lateral repaired or replaced. Permits are available from the front desk of the District's office on Schmidt Lane from 8:00 am to 5:00 pm Monday through Thursday and from 8:00 am to 4:00 pm Friday. Permits cost \$25. Be sure to obtain yours before work begins. Only vitrified clay, cast iron or HDPE pipes are approved for use in the District. PVC and ABS pipes are not allowed.

Lateral inspections by the District are conducted at the completion of the replacement and are different from inspections performed by EBMUD. EBMUD requires a home's lateral to be in good repair before a house can be sold. If they determine that lateral work is required, the homeowner must obtain a permit for the work from the District. Depending on where the house and the lateral are located, a homeowner may also be required to obtain a permit to work in the street. The District does not issue these permits. They are available from the City of El Cerrito, City of

Richmond or Contra Costa County (for Kensington).

District inspectors also check jobs performed by outside contractors on the District's sewer mains to be sure the work is being completed according to specifications. District inspectors are available to answer questions from the homeowner or contractor making lateral repairs. **S**

Stege Board of Directors

The Stege Board of Directors consists of five members, who are elected at-large from communities served by the Stege Sanitary District—El Cerrito, Kensington, and Richmond annex—and serve four-year terms. Elections are held in November. The Board generally meets on the second and fourth Thursday of each month, starting at 7:00 pm at the District office on Schmidt Lane. The public is invited to attend Board meetings.

Check www.stegesan.org for Board agendas, minutes and meeting dates. **S**



*Arvin Gonzales
inspecting
a lateral
installation*